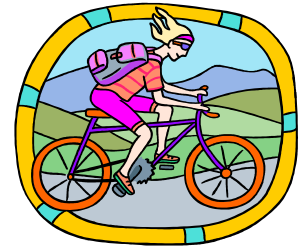


**Ride around the mountain!**



# Snowdon Charity Bike Ride



**7th & 8th March  
2009**

Since it began in the 1990s our annual Charity Event, formerly known as the Snowdon Marathon Bike Hike, has raised more than £55,000 for charities. The event is a bike ride of 30 miles on the roads around Snowdon, starting at the Cwellyn Arms in Rhyd Ddu, from where the event is organised. Riding on either day, cyclists follow a picturesque route via Llanberis, Pen y Pass, Nant Gwynant and Beddgelert before returning to the Cwellyn Arms for a Completion Certificate and a bowl of home made soup. This is an informal, sociable event, with stewards on duty throughout the day. A fun day's cycling for family groups and leisure cyclists, a ride on tarmac for mountain bikers, or a challenge ride for club cyclists.

Sponsorship and donations for the event will

***SUPPORT THE RESCUE SERVICES***



Search and Rescue Dogs



Air Ambulance



Mountain Rescue

**If you are interested in taking part  
in the event, please e-mail  
[snowdoninn@aol.com](mailto:snowdoninn@aol.com)  
We will send you more information,  
registration and sponsorship forms.  
Thank you for your support.**

